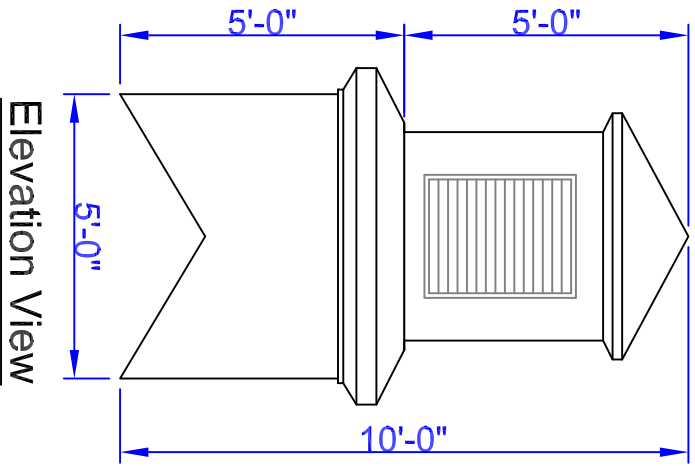
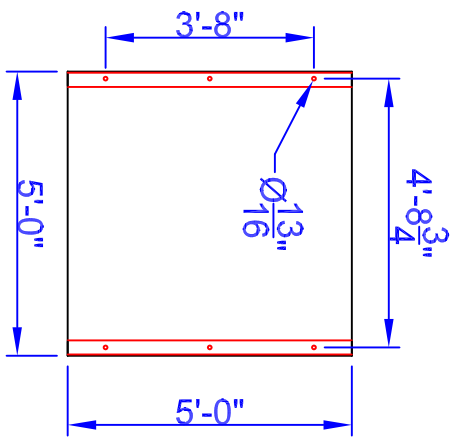


Cupola Data
Overall Height = 10'
Base Width = 5'
Unit Weight = 575 lbs.



Elevation View



Mounting Detail

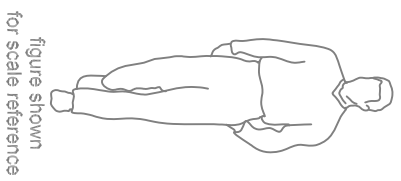


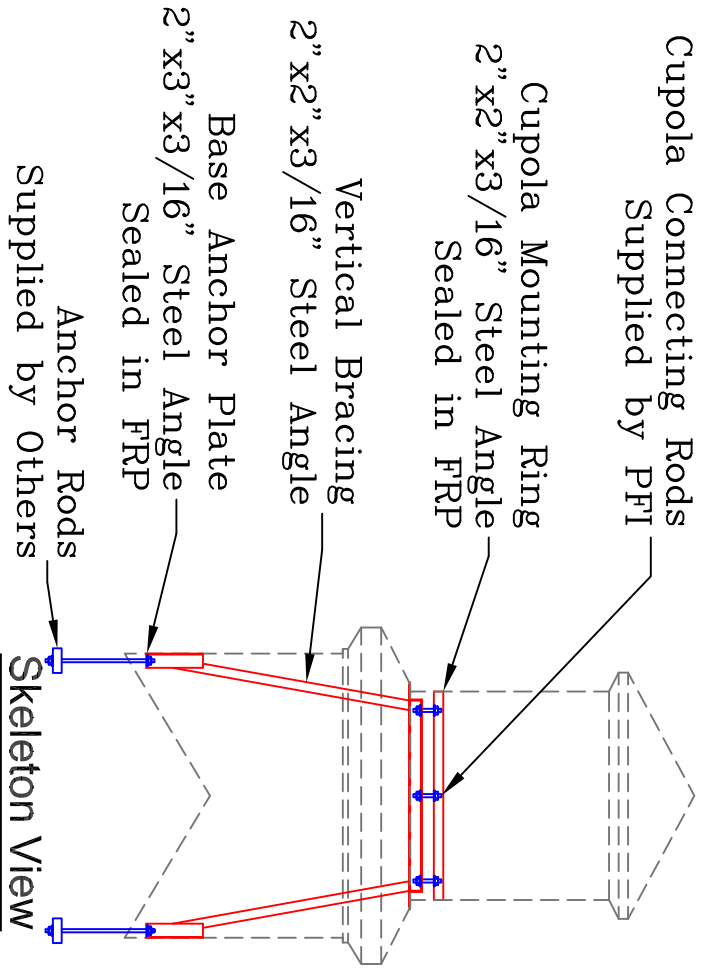
figure shown
for scale reference

Optional Cupola Finials

36" Cross
8"Ø Sphere

36" Aluminum Spire
8"Ø Sphere

Weathervane selection at :
www.whitehallproducts.com



Note: All drawings are the property of Piedmont Fiberglass. Dimensions & designs may be altered to accommodate manufacturing.

PFI
Piedmont Fiberglass
INCORPORATED

Old Fashioned Craftsmanship With Modern Composites' Technology

Piedmont Fiberglass Inc.
 PO Box 1089
 Taylorsville, NC 28681
 Phone: 828-632-8883
 Fax: 828-632-5585
 www.piedmontfiberglass.com

Model:
Cupola
500-LPK

Scale: **Scale**
 Drawn By: **TJD/JEM**
 Created On: **2/19/07**
 Updated On: **11/8/10**