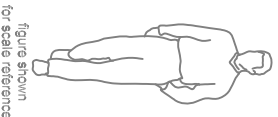
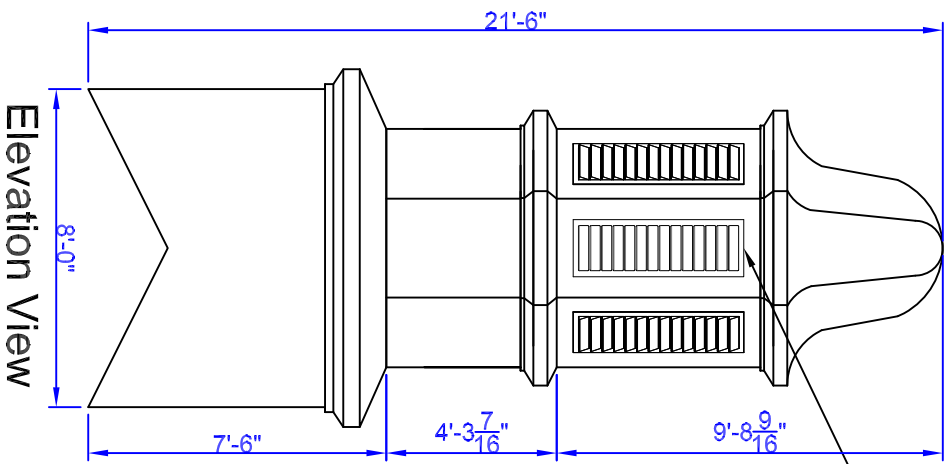


Cupola Data
 Overall Height = 21'6"
 Base Width = 8'
 Unit Weight = 1,800 lbs.



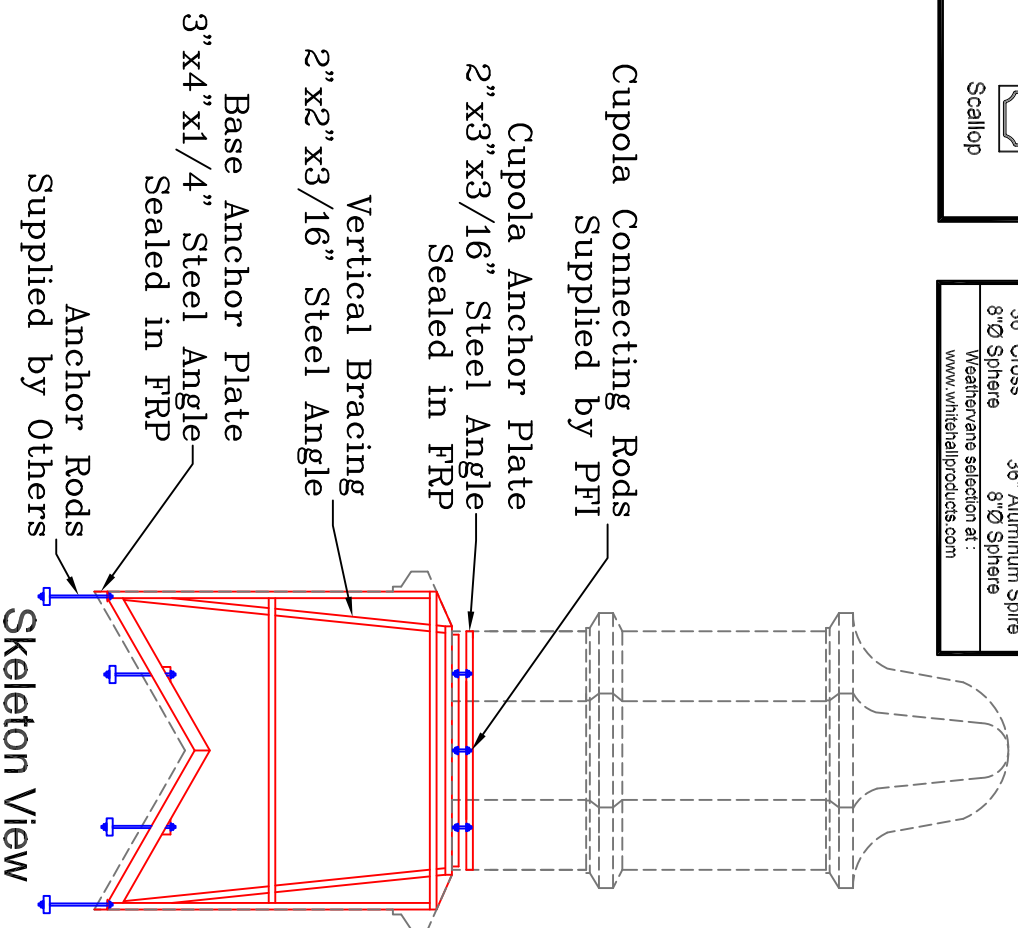
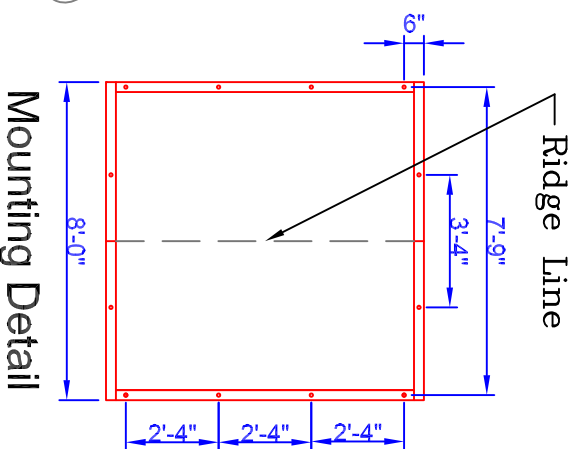
Base Panels – See Available Options Above

Available Standard Panels

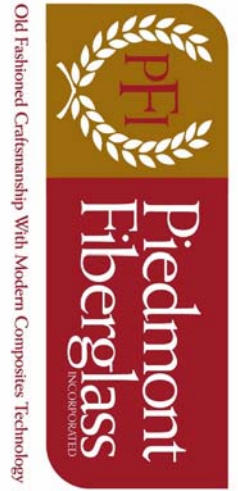
602	Decorative
106	Sq. Louver
112	Round Top Louver
502	Scallop

Optional Cupola Finials

36" Cross 8"Ø Sphere	36" Aluminum Spire 8"Ø Sphere
Weatherware selection at: www.whitehallproducts.com	



Note: All drawings are the property of Piedmont Fiberglass. Dimensions & designs may be altered to accommodate manufacturing.



Piedmont Fiberglass Inc.
 PO Box 1089
 Taylorsville, NC 28681
 Phone: 828-632-8883
 Fax: 828-632-5585
www.piedmontfiberglass.com

Cupola	Model:	680-LR
	Scale: scale	
Drawn By: TJD/JEM	Created On: 9/7/07	
	Updated On: 1/1/10/10	