
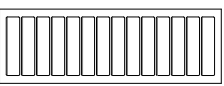
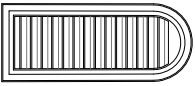

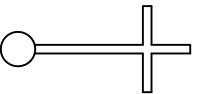



**Cupola Data**  
 Overall Height = 11' 10 3/16"  
 Base Width = 6'  
 Unit Weight = 800 lbs.

**Available Standard Panels**

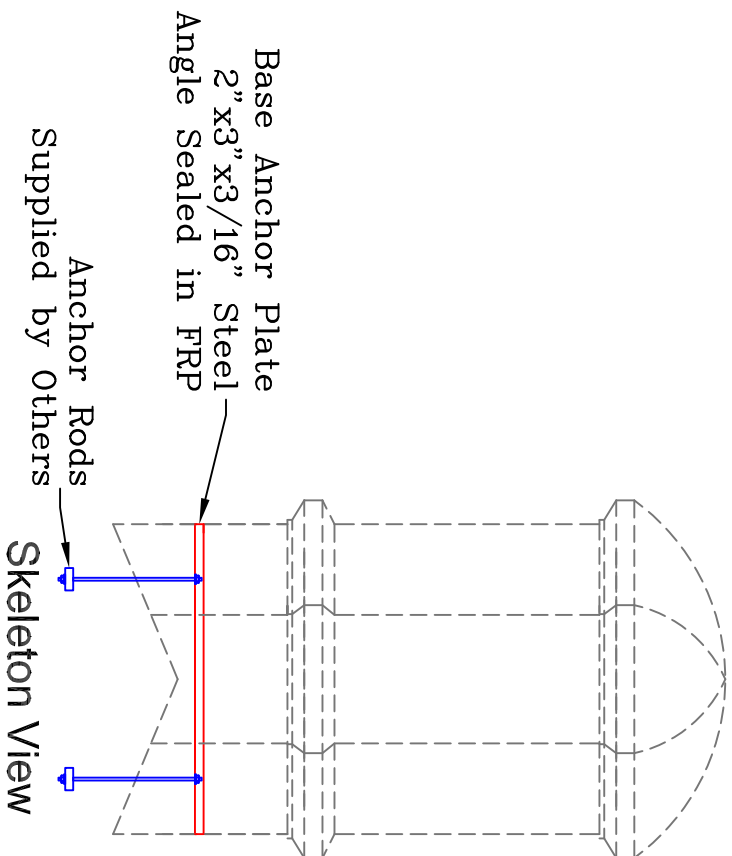
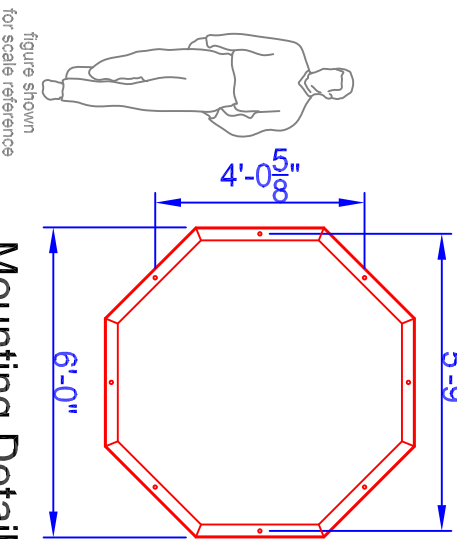
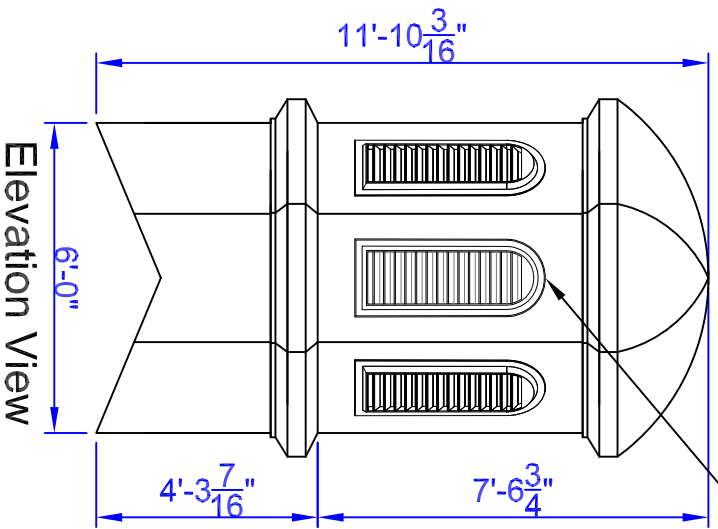
Decorative	602	
Sq. Louver	106	
Round Top Louver	112	
Scallop	502	

**Optional Cupola Finials**

	36" Cross 8"Ø Sphere		36" Aluminum Spire 8"Ø Sphere
---	-------------------------	---	----------------------------------

Weather/vane selection at :  
[www.whitehallproducts.com](http://www.whitehallproducts.com)

Base Panels – See Available Options Above



Note: All drawings are the property of Piedmont Fiberglass. Dimensions & designs may be altered to accommodate manufacturing.

**Piedmont Fiberglass**  
 INCORPORATED

Old Fashioned Craftsmanship With Modern Composites Technology

**Piedmont Fiberglass Inc.**  
 PO Box 1089  
 Taylorsville, NC 28681  
 Phone: 828-632-8883  
 Fax: 828-632-5585  
[www.piedmontfiberglass.com](http://www.piedmontfiberglass.com)

Model: **Cupola**

**600-LD**

Scale: **scale**

Drawn By: **TJD/JEM**

Created On: **2/12/07**

Updated On: **11/9/10**