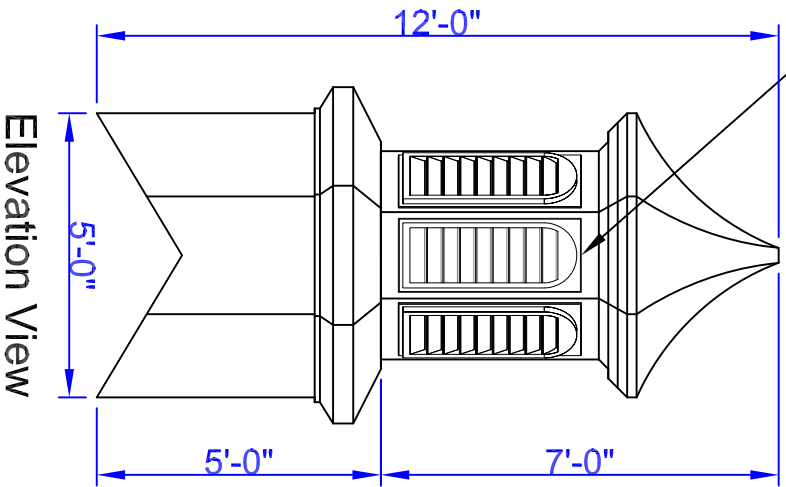


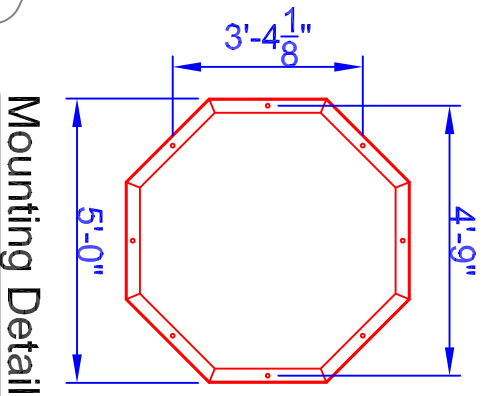
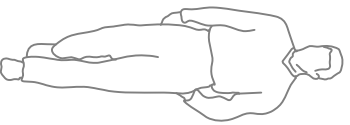
Cupola Data
 Overall Height = 12'
 Base Width = 5'
 Unit Weight = 575 lbs.

Base Panels – See Available Options Above



Elevation View

figure shown for scale reference



Mounting Detail

Available Standard Panels

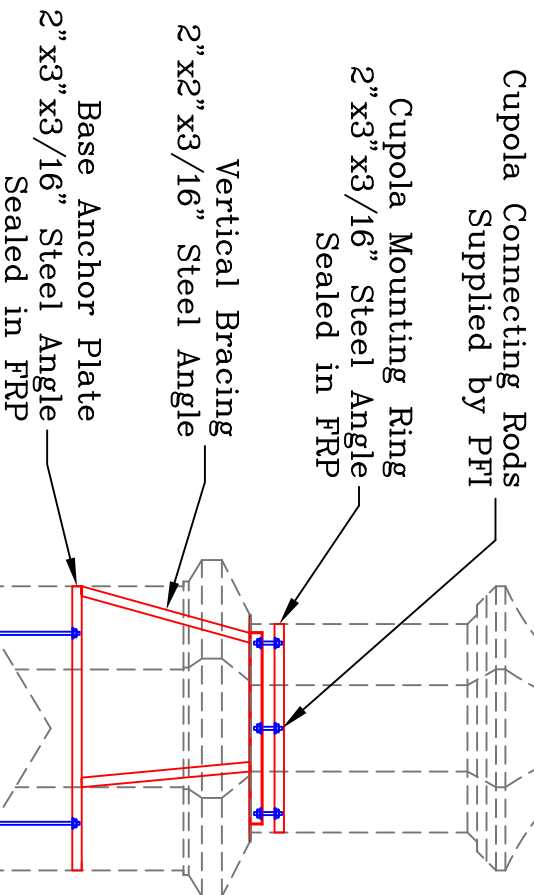
Decorative	601
Sq. Louver	104
Round Top Louver	108
Scallop	501

Optional Cupola Finials

	36" Cross 8"Ø Sphere
	36" Aluminum Spire 8"Ø Sphere

Weatheravene selection at :
www.whitehallproducts.com

Note: All drawings are the property of Piedmont Fiberglass. Dimensions & designs may be altered to accommodate manufacturing.



Skeleton View

Piedmont Fiberglass Inc.

PO Box 1089

Taylorsville, NC 28681

Phone: 828-632-8883

Fax: 828-632-5585

www.piedmontfiberglass.com



Old Fashioned Craftsmanship With Modern Composites Technology

Cupola

Model:

830-SLP

Scale: **scale**

Drawn By: **TJD/JEM**

Created On: **2/10/07**

Updated On: **11/12/10**