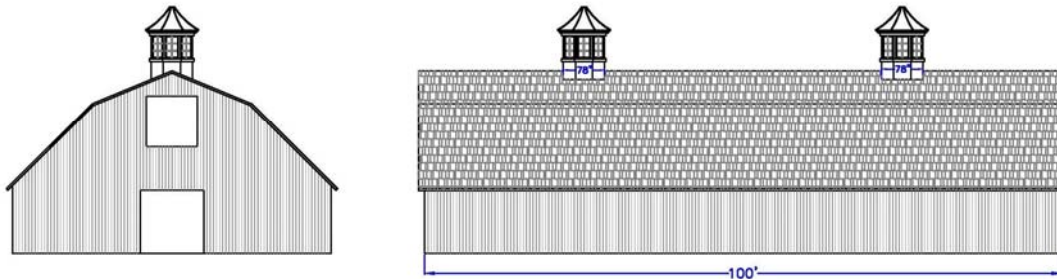


Cupola Sizing—100' Long Building



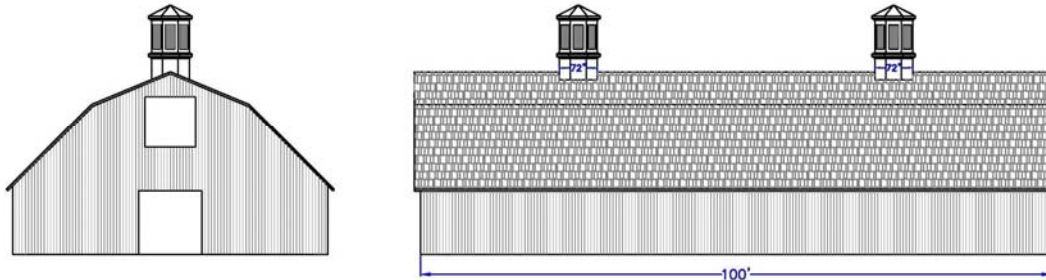
When properly sizing (1) cupola, a general rule of thumb is a minimum of 1.25" of cupola base width for every foot of unbroken roof ridge line. For (2) or (3) cupolas use 1.5" and for (4) or more cupolas use 1.75".

Properly Proportioned



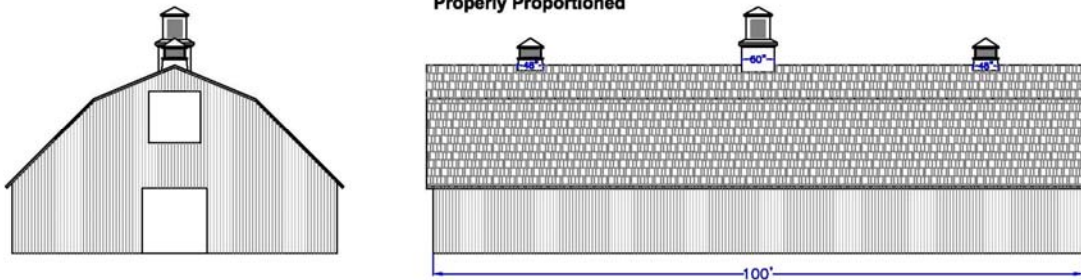
Using the rule of 1.5" of cupola base width for every foot of unbroken ridge line, (2) model 660-W cupolas are properly proportioned for this 100ft long building.

Properly Proportioned



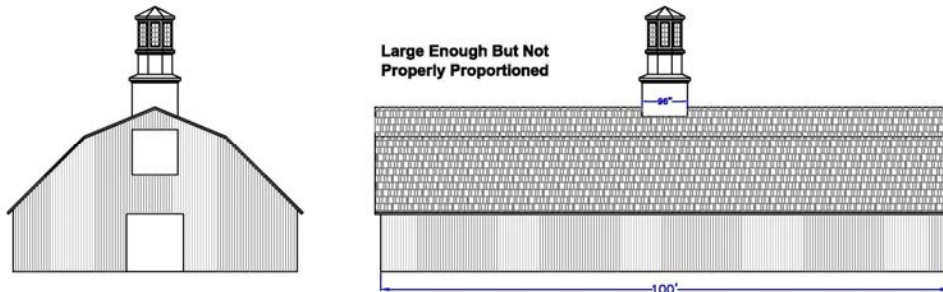
Using the rule of 1.5" of cupola base width for every foot of unbroken ridge line, (2) model 600-LPK cupolas are properly proportioned for this 100ft long building.

Properly Proportioned



Using the rule of 1.5" of cupola base width for every foot of unbroken ridge line, (1) model 500-LPK cupola and (2) model 400 cupolas are properly proportioned.

Large Enough But Not Properly Proportioned



Using the rule of 1.25" of cupola base width for every foot of unbroken ridge line, (1) model 680-LPK cupola doesn't appear properly proportioned.