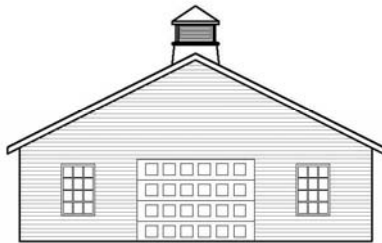


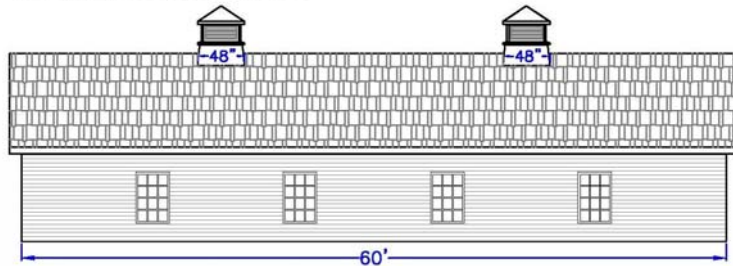
Cupola Sizing—60' Long Building



When properly sizing (1) cupola, a general rule of thumb is a minimum of 1.25" of cupola base width for every foot of unbroken roof ridge line. For (2) or (3) cupolas use 1.5" and for (4) or more cupolas use 1.75".



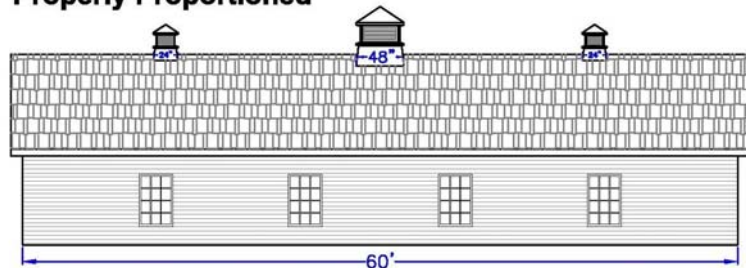
Properly Proportioned



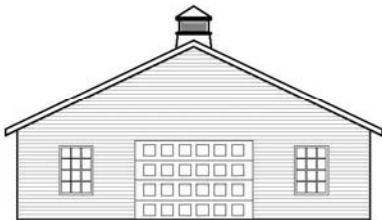
Using the rule of 1.5" of cupola base width for every foot of unbroken ridge line, (2) model 400 cupolas are properly proportioned for this 60ft long building.



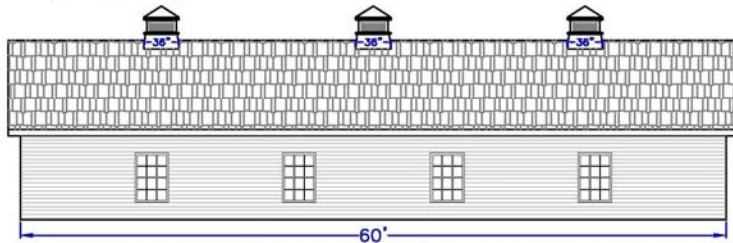
Properly Proportioned



Using the rule of 1.5" of cupola base width for every foot of unbroken ridge line, (1) model 400 cupola and (2) model 200 cupolas are properly proportioned.



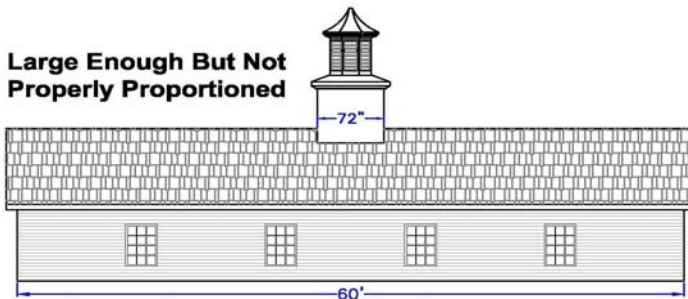
Properly Proportioned



Using the rule of 1.5" of cupola base width for every foot of unbroken ridge line, (3) model 300 cupolas are properly proportioned.



Large Enough But Not Properly Proportioned



Using the rule of 1.25" of cupola base width for every foot of unbroken ridge line, (1) model 860-LP cupola doesn't appear properly proportioned.